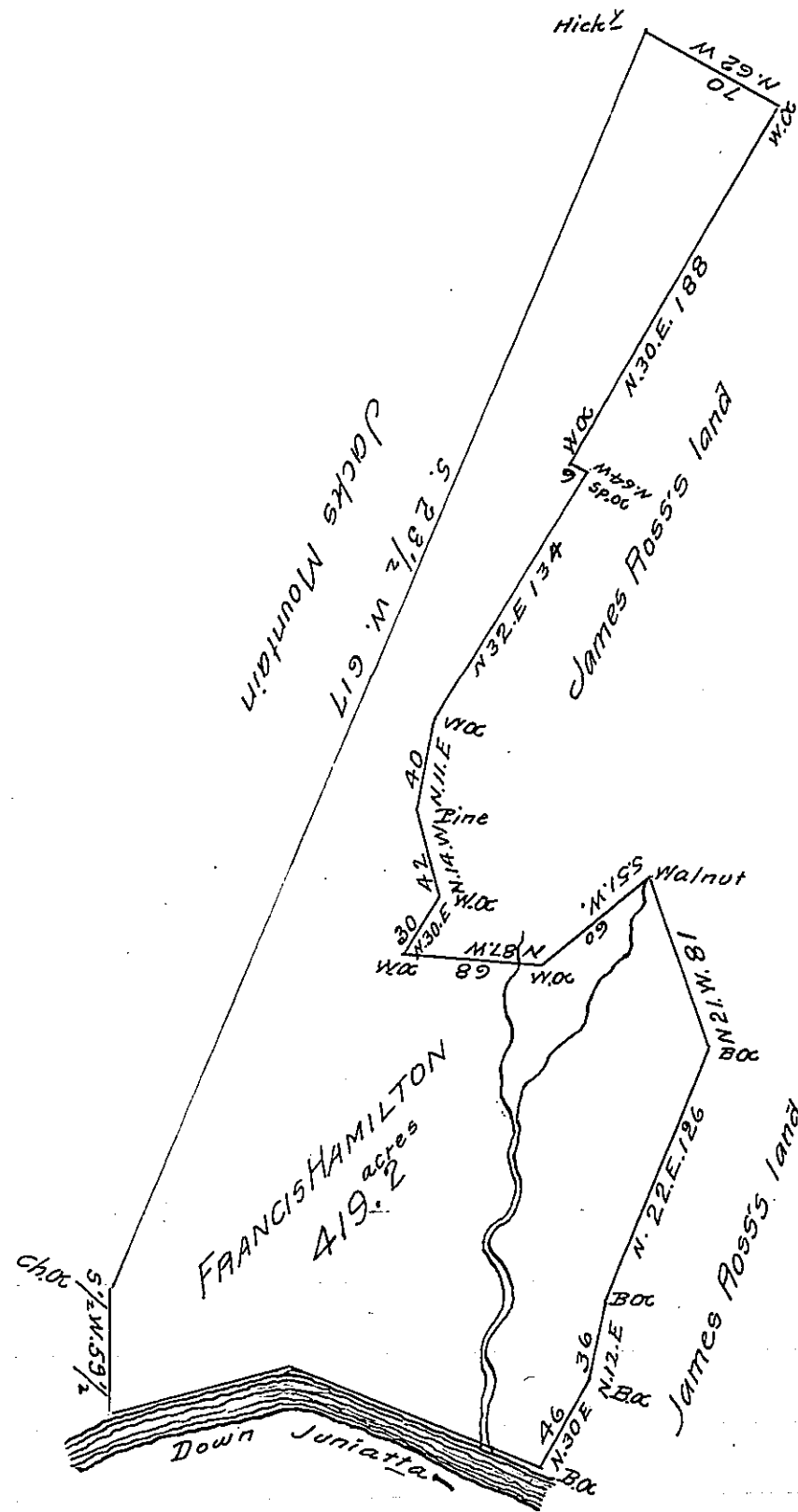


Courses & Distances  
 N 75 E 89 } down the  
 S 67 E 126 } riverside

N 30 E	46
N 12 E	36
N 22 E	126
N 21 W	86
S 51 W	60
N 87 W	68
N 30 W	30
N 14 W	42
N 11 E	40
N 32 E	134
N 64 W	6
N 30 E	188
N 62 W	70
S 23 1/2 W	617
S 1/2 W	59 1/2



The Draught of a Tract of Land situate in Wayne Township Cumberland County  
 Containing Four hundred & Nineteen acres & two tenths & the usual allowance of Six  
 per Cent for roads &c.<sup>o</sup> Surveyed for Francis Hamilton June the 28<sup>th</sup> 1785 in  
 pursuance of a Warrant from the Honorable the Vice President of the  
 Supreme Executive Council. dated Feb<sup>y</sup>. the 23<sup>d</sup> 1785

Ja<sup>s</sup> Harris D. S.

To John Lukens Esq<sup>r</sup> Surv<sup>r</sup> Gen<sup>l</sup>

IN TESTIMONY that the above is a copy of the original remaining on file in  
 the Department of Internal Affairs of Pennsylvania, made  
 conformably to an Act of Assembly approved the 16th day of  
 February 1833, I have hereunto set my hand and caused  
 the Seal of said Department to be affixed at Harrisburg,  
 this thirteenth day of November 1907

*Henry Howe*  
 Secretary of Internal Affairs.